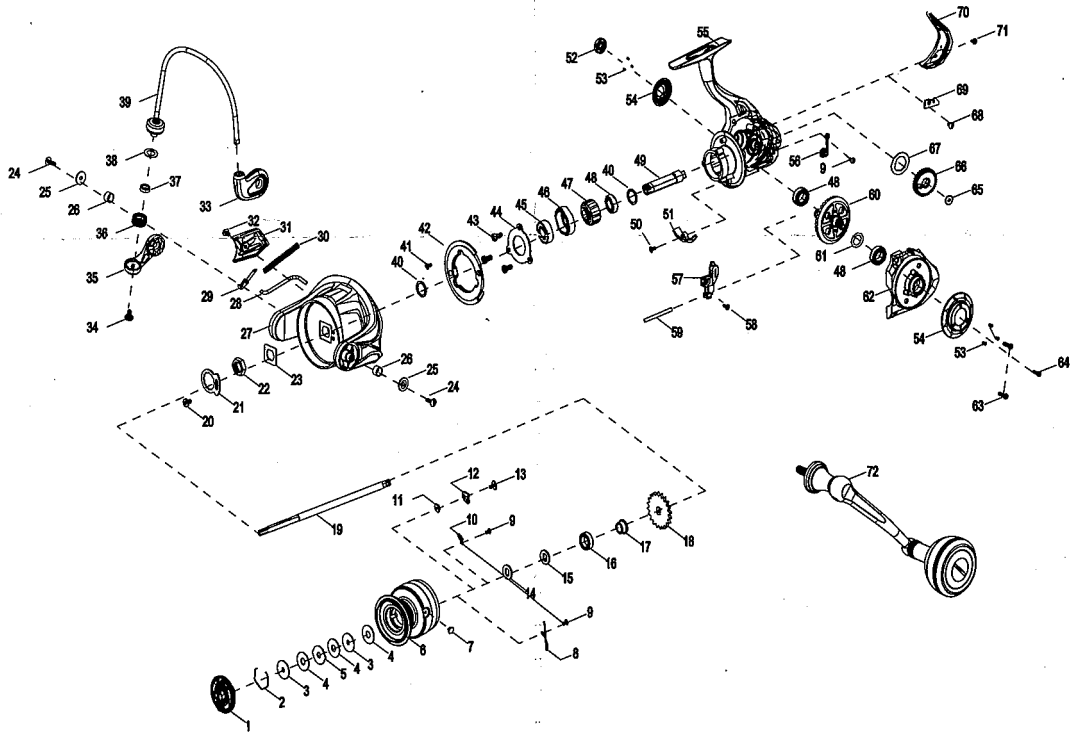


SAVAGE GEAR *it's a savage world*

EXPLODED VIEW OF SGS8 4000



EXPLODED VIEW OF SGS8 4000

| ITEM | DESCRIPTION | ITEM | DESCRIPTION | ITEM | DESCRIPTION |
|------|-------------------------|------|---------------------------------|------|-----------------|
| 1 | Drag Knob Assy | 26 | Bushing | 51 | Body Slope |
| 2 | Spool Clasp | 27 | Rotor | 52 | Handle Cap |
| 3 | Key Washer | 28 | Rotor Trip Lever | 53 | Screw |
| 4 | Washer | 29 | Pivot Arm | 54 | Body Trim Ring |
| 5 | Eared Washer | 30 | Bail Spring | 55 | Body |
| 6 | Spool | 31 | Rotor Cover | 56 | Lube Port Cap |
| 7 | Line Hook | 32 | Screw | 57 | Slider |
| 8 | Spring | 33 | Bail Holder | 58 | Screw |
| 9 | Screw | 34 | Screw | 59 | Guide Shaft |
| 10 | Spring | 35 | Bail Arm | 60 | Drive Gear |
| 11 | Spool Click Spacer Ring | 36 | Line Roller | 61 | Washer |
| 12 | Spool Click Plate | 37 | Bearing | 62 | Body Cover |
| 13 | Screw | 38 | Washer | 63 | Screw |
| 14 | Washer | 39 | Bail Assembly | 64 | Screw |
| 15 | Washer | 40 | Washer | 65 | Screw |
| 16 | Bearing | 41 | Screw | 66 | O/S Gear |
| 17 | Bushing | 42 | Rotor Brake | 67 | Washer |
| 18 | Click Gear | 43 | Screw | 68 | Screw |
| 19 | Main Shaft | 44 | Ball Bearing Retainer | 69 | Plate |
| 20 | Screw | 45 | Bearing | 70 | Rear Cover |
| 21 | Rotor Nut Locking Plate | 46 | Pinion Bearing Collar | 71 | Screw |
| 22 | Rotor Nut | 47 | One Way Clutch Bearing Assembly | 72 | Handle Assembly |
| 23 | Washer | 48 | Bearing | | |
| 24 | Screw | 49 | Pinion Gear | | |
| 25 | Rotor Plate | 50 | Screw | | |

